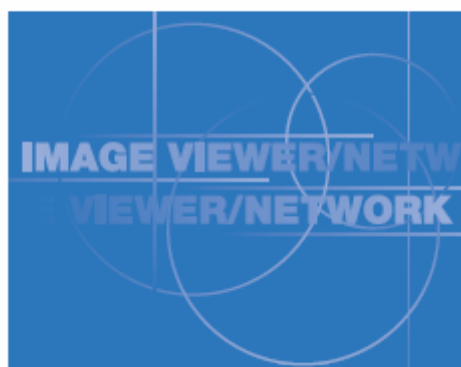


**U4-237**

## **Presenter-to-Go**

**USER'S MANUAL**



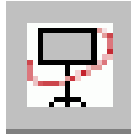
### **Creating PDB Format Presentations for Viewer**

• MARGI, MARGI Mirror the MARGI logo, and Presenter-to-Go are all trademarks of MARGI Systems Inc.

## Introduction

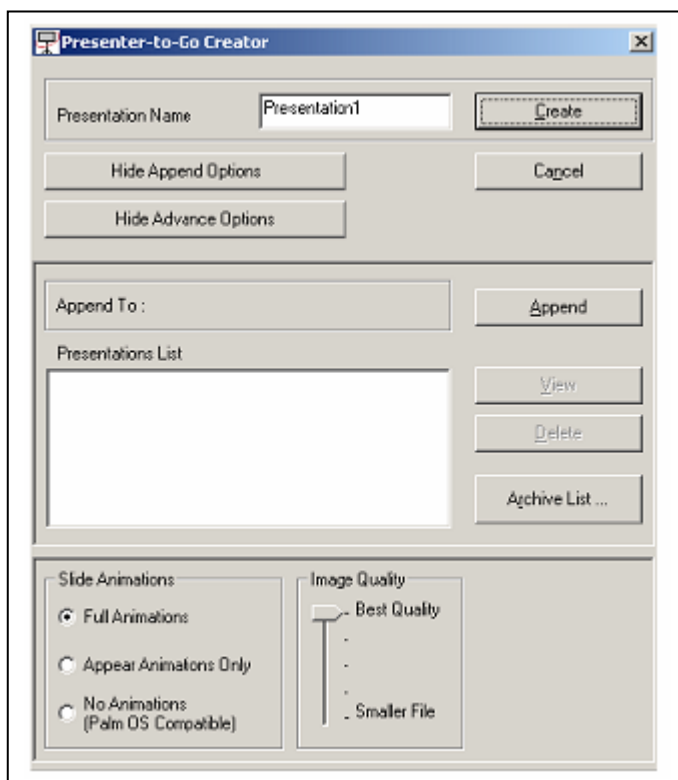
On your computer, you can create a PDB format presentation which can be shown on the ***U4-237 viewer***. You can do this from ***Microsoft PowerPoint*** using the steps below, or you can do this by printing from any ***Windows*** printable application.

## Creating presentations from *PowerPoint*



First, on your computer, open an existing *PowerPoint* presentation and click the **Presenter-to-Go** button on the *PowerPoint* toolbar.

### *Presenter-to-Go* Creator



In the **Presenter-to-Go Creator** window, click *Show Advanced Options*, and select the appropriate settings. See the following table for a description of the options.

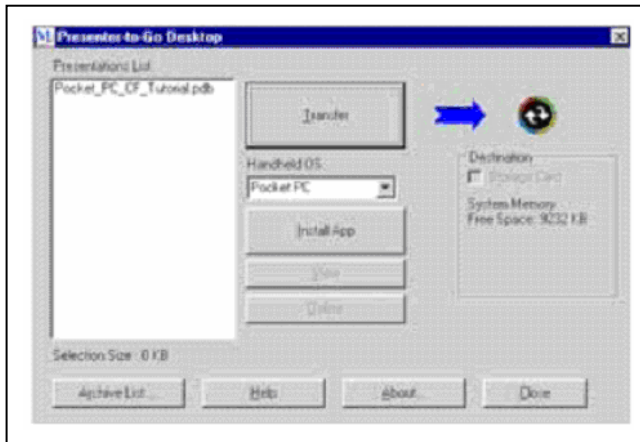
Full Animations	Select this option to retain animations and transitions in your presentation.*
Appear Animations Only	Select this option to enable compatibility with wired <b>Presenter-to-Go</b> for <b>Pocket PC</b> .
No Animations (Palm OS Compatible)	Select this option to enable compatibility with wired <b>Presenter-to-Go</b> for <b>Palm</b> .
Image Quality	The better the quality, the larger the file size.

\*Supports popular animations and transitions.

\***Presenter-to-Go** does not support all audio/video features available in PowerPoint.

	To create a new presentation, click Create.
	To add the slides to another presentation, select it from the <i>Presentations List</i> and click Append.

## ***Presenter-to-Go Desktop***



Choose proper type of device from the drop-down box, and then click *Transfer*. After you click *Transfer*, your selected presentation downloads to the selected destination.

View	To review the converted presentation, click <i>View</i> .
Destination	To send the presentation to a memory card, click <i>Destination</i> .
Install App	To install <b><i>Presenter-to-Go</i></b> software on the handheld device, click <i>Install App</i> .
Archive List	To resend a presentation previously sent, click <i>Archive List</i> .

## Creating presentations from other applications



On your computer, open the application with which you want to generate presentation slides. Then open the print dialog box, and select **Presenter-to-Go** from the drop-down list of available printers.

Next Click OK. This action converts the document to landscape orientation (mobile presentation format). If the size of the document exceeds one page, the balance of the document is saved as additional slides until all the material is converted. Then the **Presenter-to-Go Creator** window opens.

In the **Presenter-to-Go Creator** window, follow as described earlier in the PowerPoint part of this topic.